



**31<sup>ST</sup> REFUGE FLOOR PLAN | TOWER C**




MahaRERA reg. no. P51700029367 - Tower A, P51700028685 - Tower B, P51700029365 - Tower G, P51700028686 - Tower H & P51700033851 - Tower C. For details please visit <http://maharera.mahaonline.gov.in>

NOT TO SCALE | The above mentioned dimensions are in meters & (feet). (1 Meter = 3.28 Feet). The furniture / fixtures shown in the image are only indicative and representational (not actual) in nature & only for the purpose of illustrating / indicating a possible layout and do not form a part of the standard specifications, amenities, services. etc. to be provided in respect of the flat. All specifications of the flat shall be as per the agreement for sale (if any) between the parties.



**32<sup>ND</sup> & 33<sup>RD</sup> TYPICAL FLOOR PLAN | TOWER C**




MahaRERA reg. no. P51700029367 - Tower A, P51700028685 - Tower B, P51700029365 - Tower G, P51700028686 - Tower H & P51700033851 - Tower C. For details please visit <http://maharera.mahaonline.gov.in>

NOT TO SCALE | The above mentioned dimensions are in meters & (feet). (1 Meter = 3.28 Feet). The furniture / fixtures shown in the image are only indicative and representational (not actual) in nature & only for the purpose of illustrating / indicating a possible layout and do not form a part of the standard specifications, amenities, services. etc. to be provided in respect of the flat. All specifications of the flat shall be as per the agreement for sale (if any) between the parties.





**1<sup>ST</sup> FLOOR PLAN | TOWER C**



MahaRERA reg. no. P51700029367 - Tower A, P51700028685 - Tower B, P51700029365 - Tower G, P51700028686 - Tower H & P51700033851 - Tower C. For details please visit <http://maharera.mahaonline.gov.in>

NOT TO SCALE | The above mentioned dimensions are in meters & (feet). (1 Meter = 3.28 Feet). The furniture / fixtures shown in the image are only indicative and representational (not actual) in nature & only for the purpose of illustrating / indicating a possible layout and do not form a part of the standard specifications, amenities, services. etc. to be provided in respect of the flat. All specifications of the flat shall be as per the agreement for sale (if any) between the parties.



**TYPICAL FLOOR PLAN | TOWER C**

2<sup>ND</sup> - 5<sup>TH</sup>, 7<sup>TH</sup> - 10<sup>TH</sup>, 12<sup>TH</sup> - 15<sup>TH</sup>, 17<sup>TH</sup> - 20<sup>TH</sup>, 22<sup>ND</sup> - 25<sup>TH</sup>, 27<sup>TH</sup> - 30<sup>TH</sup>







**TYPICAL REFUGE FLOOR PLAN | TOWER C**

6<sup>TH</sup>, 11<sup>TH</sup>, 16<sup>TH</sup>, 21<sup>TH</sup>, 26<sup>TH</sup>





## JODI FLAT | TOWER C



MahaRERA reg. no. P51700029367 - Tower A, P51700028685 - Tower B, P51700029365 - Tower G, P51700028686 - Tower H & P51700033851 - Tower C. For details please visit <http://maharera.mahaonline.gov.in>

NOT TO SCALE | The above mentioned dimensions are in meters & (feet). (1 Meter = 3.28 Feet). The furniture / fixtures shown in the image are only indicative and representational (not actual) in nature & only for the purpose of illustrating / indicating a possible layout and do not form a part of the standard specifications, amenities, services, etc. to be provided in respect of the flat. All specifications of the flat shall be as per the agreement for sale (if any) between the parties.



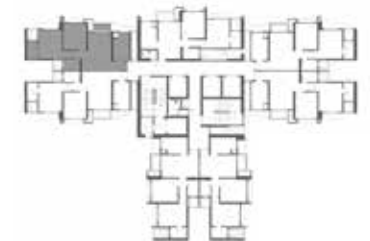
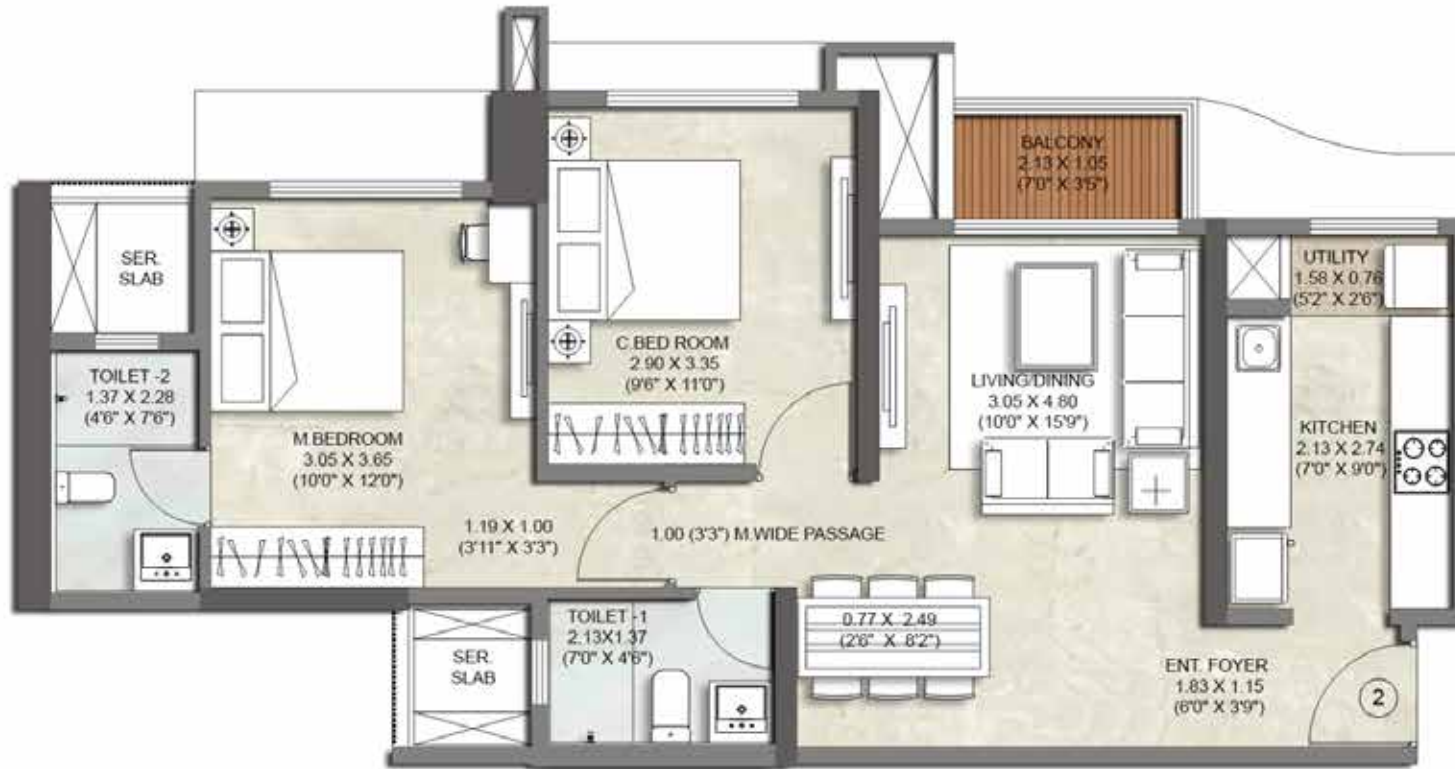
**2 BHK PRIMA C | TOWER C | UNIT NO. - 01**



MahaRERA reg. no. P51700029367 - Tower A, P51700028685 - Tower B, P51700029365 - Tower G, P51700028686 - Tower H & P51700033851 - Tower C. For details please visit <http://maharera.mahaonline.gov.in>

NOT TO SCALE | The above mentioned dimensions are in meters & (feet). (1 Meter = 3.28 Feet). The furniture / fixtures shown in the image are only indicative and representational (not actual) in nature & only for the purpose of illustrating / indicating a possible layout and do not form a part of the standard specifications, amenities, services, etc. to be provided in respect of the flat. All specifications of the flat shall be as per the agreement for sale (if any) between the parties.





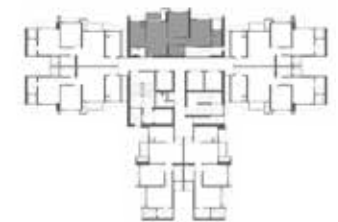
**2 BHK PRIMA C | TOWER C | UNIT NO. - 02**



MahaRERA reg. no. P51700029367 - Tower A, P51700028685 - Tower B, P51700029365 - Tower G, P51700028686 - Tower H & P51700033851 - Tower C. For details please visit <http://maharera.mahaonline.gov.in>

NOT TO SCALE | The above mentioned dimensions are in meters & (feet). (1 Meter = 3.28 Feet). The furniture / fixtures shown in the image are only indicative and representational (not actual) in nature & only for the purpose of illustrating / indicating a possible layout and do not form a part of the standard specifications, amenities, services, etc. to be provided in respect of the flat. All specifications of the flat shall be as per the agreement for sale (if any) between the parties.



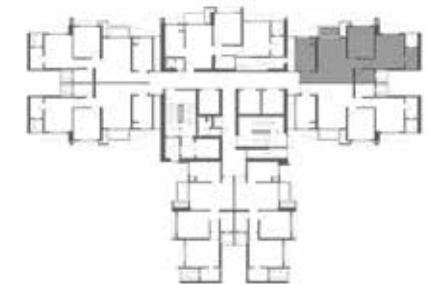
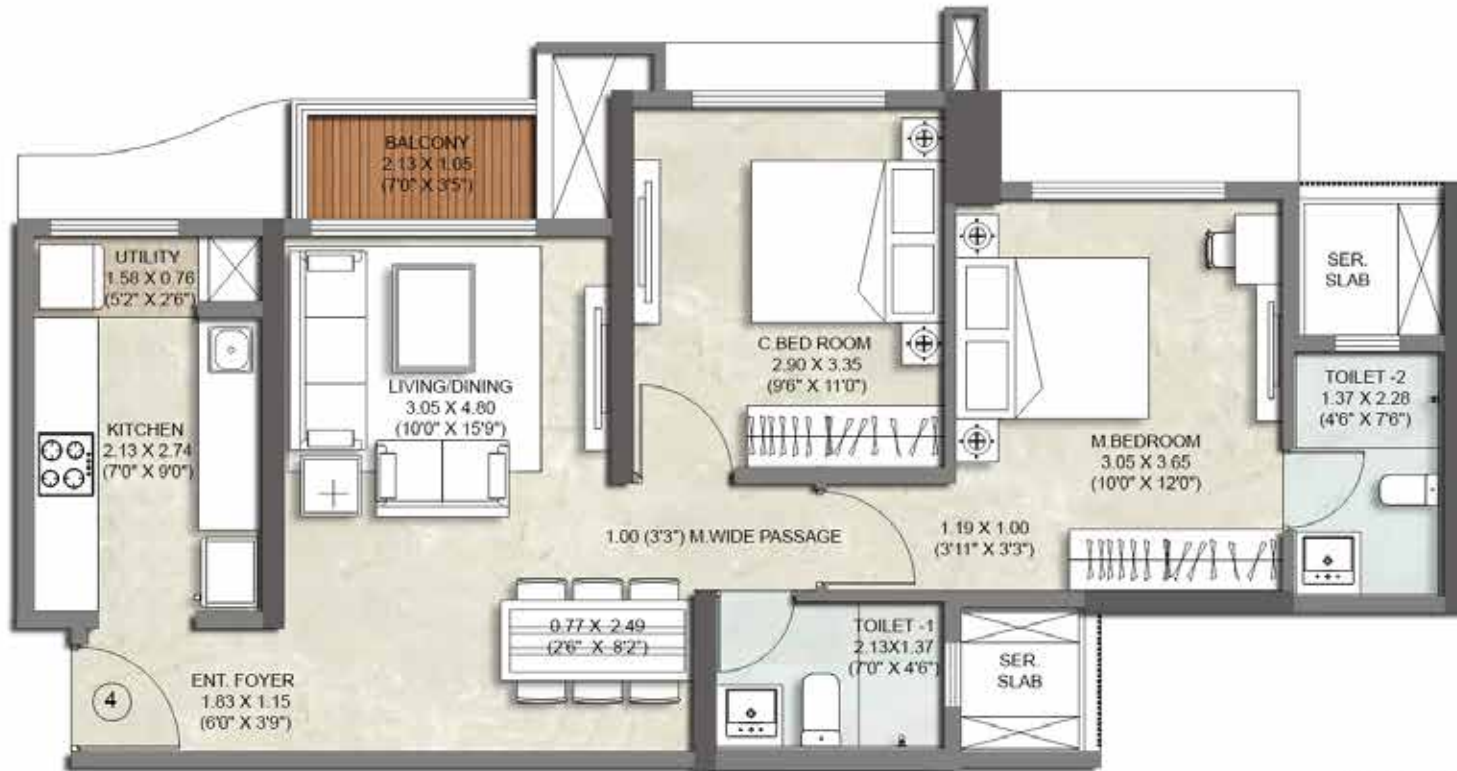


**2 BHK OPTIMA D | TOWER C | UNIT NO. - 03**



MahaRERA reg. no. P51700029367 - Tower A, P51700028685 - Tower B, P51700029365 - Tower G, P51700028686 - Tower H & P51700033851 - Tower C. For details please visit <http://maharera.mahaonline.gov.in>

NOT TO SCALE | The above mentioned dimensions are in meters & (feet). (1 Meter = 3.28 Feet). The furniture / fixtures shown in the image are only indicative and representational (not actual) in nature & only for the purpose of illustrating / indicating a possible layout and do not form a part of the standard specifications, amenities, services, etc. to be provided in respect of the flat. All specifications of the flat shall be as per the agreement for sale (if any) between the parties.

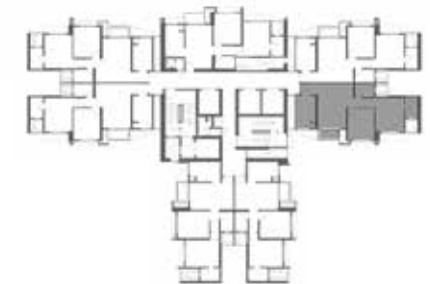
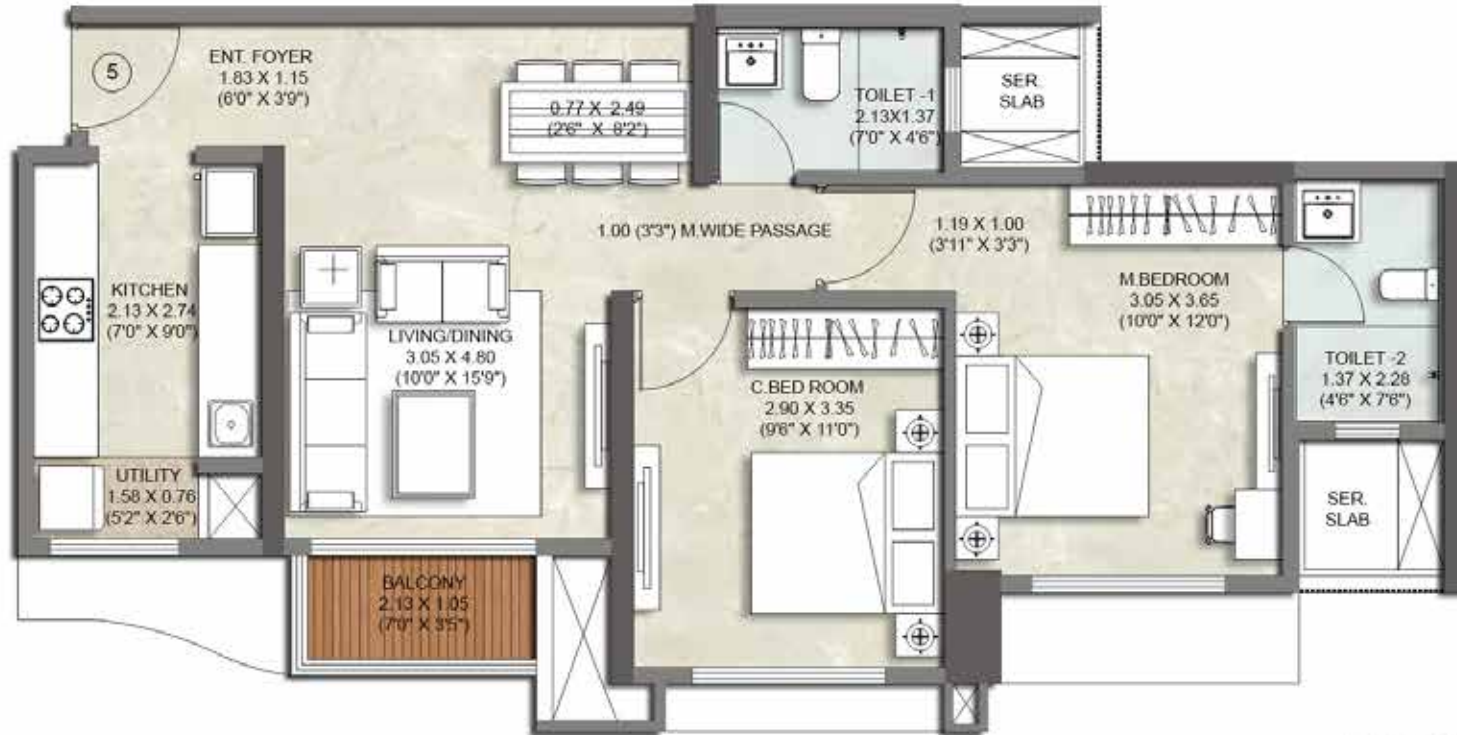


**2 BHK PRIMA C | TOWER C | UNIT NO. - 04**



MahaRERA reg. no. P51700029367 - Tower A, P51700028685 - Tower B, P51700029365 - Tower G, P51700028686 - Tower H & P51700033851 - Tower C. For details please visit <http://maharera.mahaonline.gov.in>

NOT TO SCALE | The above mentioned dimensions are in meters & (feet). (1 Meter = 3.28 Feet). The furniture / fixtures shown in the image are only indicative and representational (not actual) in nature & only for the purpose of illustrating / indicating a possible layout and do not form a part of the standard specifications, amenities, services, etc. to be provided in respect of the flat. All specifications of the flat shall be as per the agreement for sale (if any) between the parties.



**2 BHK PRIMA C | TOWER C | UNIT NO. - 05**



MahaRERA reg. no. P51700029367 - Tower A, P51700028685 - Tower B, P51700029365 - Tower G, P51700028686 - Tower H & P51700033851 - Tower C. For details please visit <http://maharera.mahaonline.gov.in>

NOT TO SCALE | The above mentioned dimensions are in meters & (feet). (1 Meter = 3.28 Feet). The furniture / fixtures shown in the image are only indicative and representational (not actual) in nature & only for the purpose of illustrating / indicating a possible layout and do not form a part of the standard specifications, amenities, services, etc. to be provided in respect of the flat. All specifications of the flat shall be as per the agreement for sale (if any) between the parties.





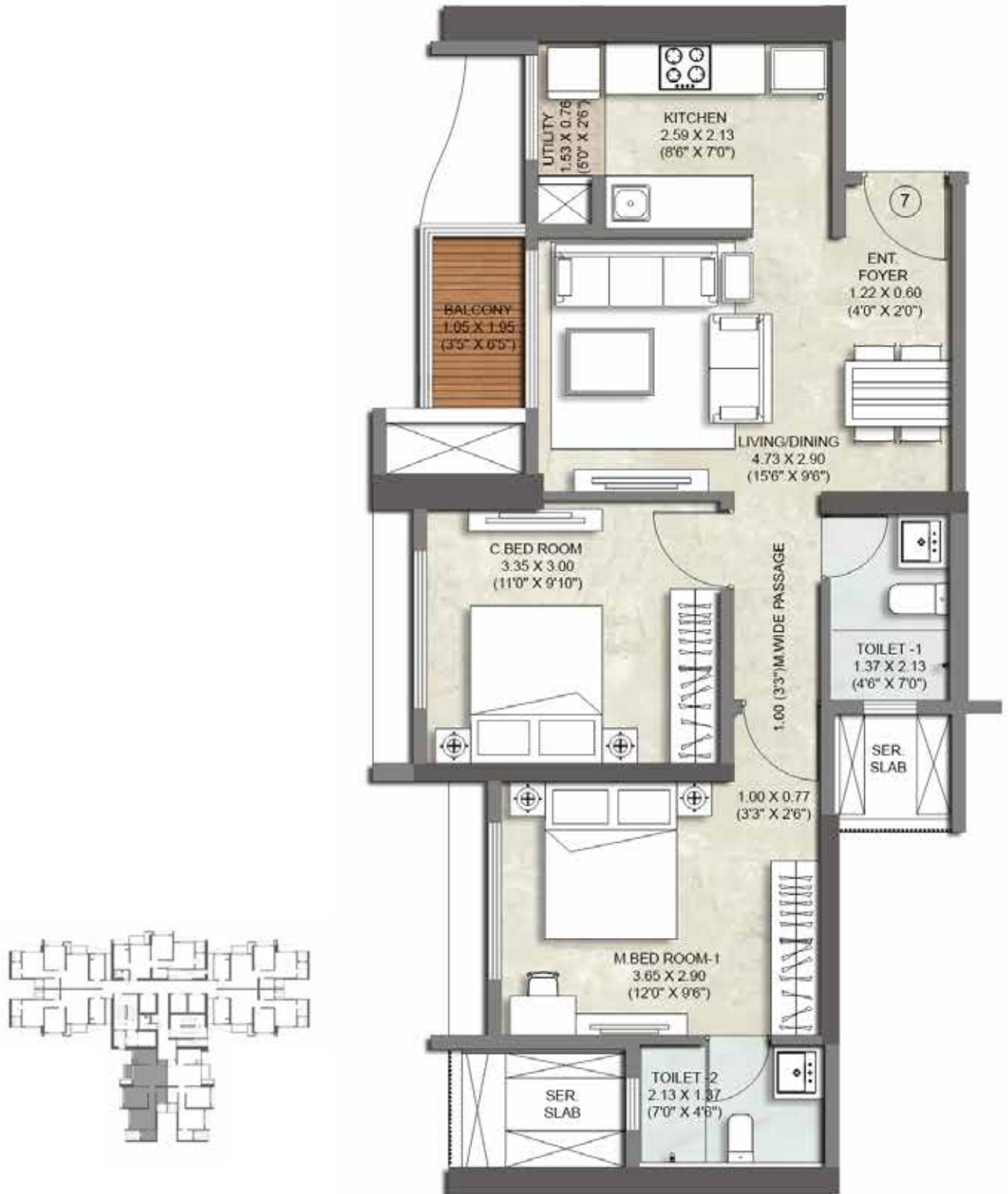
**2 BHK PRIMA B | TOWER C | UNIT NO. - 06**





SRISHTI  
NAMAHAH

9 MIRA ROAD

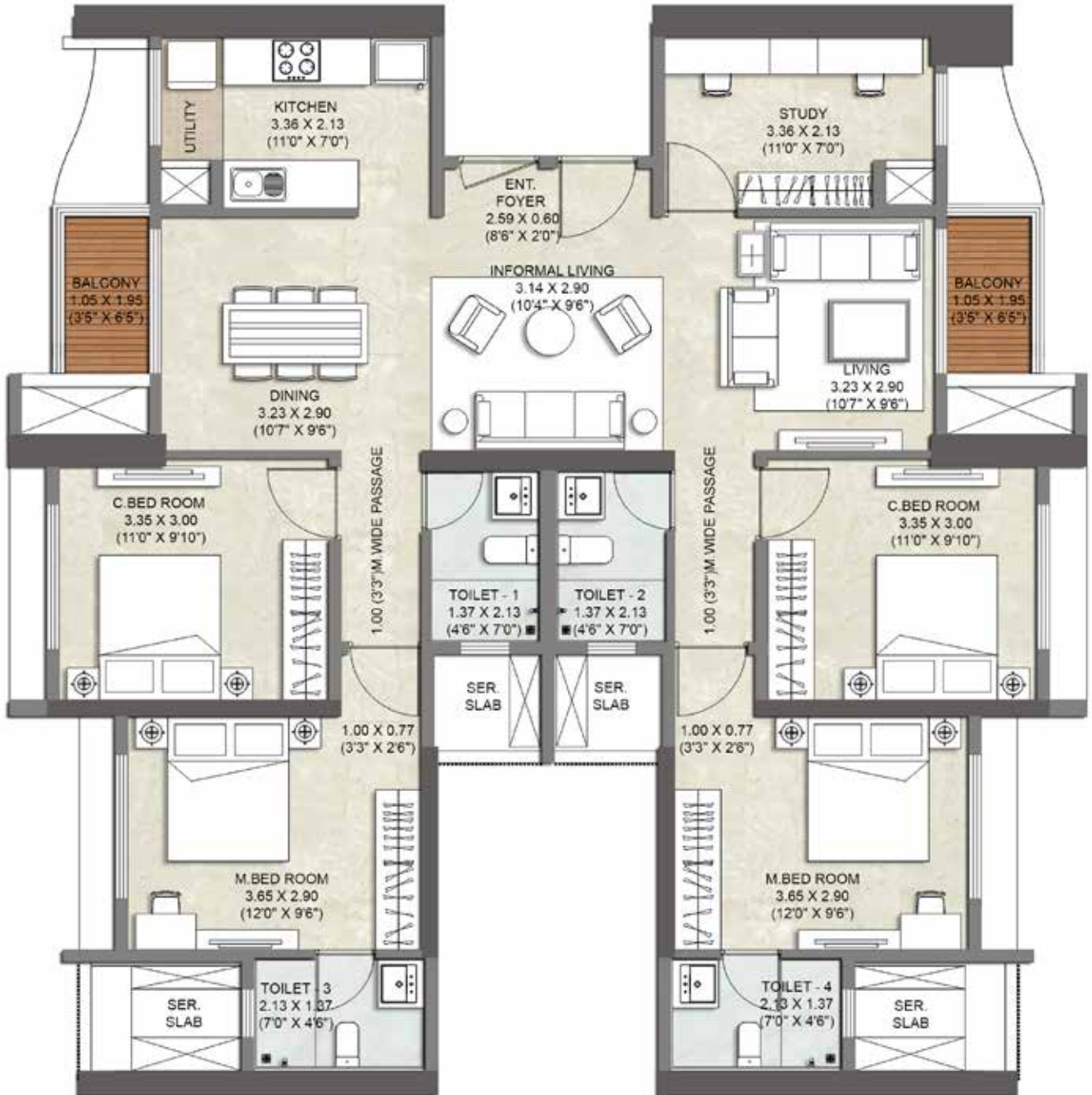


**2 BHK PRIMA B | TOWER C | UNIT NO. - 07**



MahaRERA reg. no. P51700029367 - Tower A, P51700028685 - Tower B, P51700029365 - Tower G & P51700028686 - Tower H & P51700033851 - Tower C.  
For details please visit <http://maharera.mahaonline.gov.in>

**NOT TO SCALE** | The above mentioned dimensions are in meters & (feet). (1 Meter = 3.28 Feet). The furniture / fixtures shown in the image are only indicative and representational (not actual) in nature & only for the purpose of illustrating / indicating a possible layout and do not form a part of the standard specifications, amenities, services, etc. to be provided in respect of the flat. All specifications of the flat shall be as per the agreement for sale (if any) between the parties.



**JODI PLAN | TOWER C | UNIT NO. - 06**



MahaRERA reg. no. P51700029367 - Tower A, P51700028685 - Tower B, P51700029365 - Tower G & P51700028686 - Tower H & P51700033851 - Tower C. For details please visit <http://maharera.mahaonline.gov.in>

NOT TO SCALE | The above mentioned dimensions are in meters & (feet). (1 Meter = 3.28 Feet). The furniture / fixtures shown in the image are only indicative and representational (not actual) in nature & only for the purpose of illustrating / indicating a possible layout and do not form a part of the standard specifications, amenities, services, etc. to be provided in respect of the flat. All specifications of the flat shall be as per the agreement for sale (if any) between the parties.